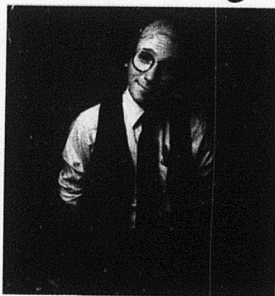


V
2
8
/
2
0

S
E
2
7
/
8
0
UMI

Every once in a while some designer finds a spot in a new machine for a sensor, a pushbutton or a keyboard, and none of the 50,000 devices we make will fit. It's always something.



Keyboards

Considering the number of products we make, you'd think we could satisfy all of the people who design machines like computers and copiers.

But no.

Every once in a while, someone still comes up with an idea that our products don't quite fit.

Naturally, we do everything we can to help. Which happens to be a lot considering the years of experience we have in the switching business.

You see, one of the reasons we have so many sensors and manual controls in the first place is because people have always come to us with design problems. And they've usually resulted in new products. Which become part of our product line.

So when you come to us with some new idea, we're in a good position to modify an existing product for you.

Especially if you call us when you're starting a new project. That way, you get our nearly 50 years' experience helping customers solve design problems.

Experience that includes the human factors engineering that makes our pushbuttons easier for people to use. And the Hall effect technology that makes our solid state sensors the most accurate you can buy.

So, if you have a design problem that's been bothering you, call us at 815-235-6600. Or write MICRO SWITCH, The Sensor Consultants, Freeport, Illinois 61032.



MICRO SWITCH
a Honeywell Division